

Quick Start Guide



Of Professional HD IP Cameras V2.1

More information can be downloaded at www.cctvsno.com

This manual is applies to our professional series IP cameras such as:

Bullet HD IP cameras

Dome HD IP cameras

PTZ HD IP cameras

Please download the correct product CD information at

www.cctvsno.com before operating the camera.

Recommended operating the IP camera according to the content below.

Content

1. About camera	3
2. Connect camera	4
3. View via mobile phone	5
4. View via PC	6
5. Set WIFI	8
6. Set Micro SD card records	9
7. Reboot and restore factory setting	11
8. More info	12

1. About camera

1.1 Product introduction.

This is a digital HD IP camera for monitoring. It connects to the Internet to send and receive data, and you can use it to remotely view real-time images from your mobile phone, computer or other device anytime and anywhere, it can save surveillance videos in the Micro SD card, computer or other device such as an NVR, The camera also supports alarm functions such as sending alarm emails, alarming cell phone message push and other functions.

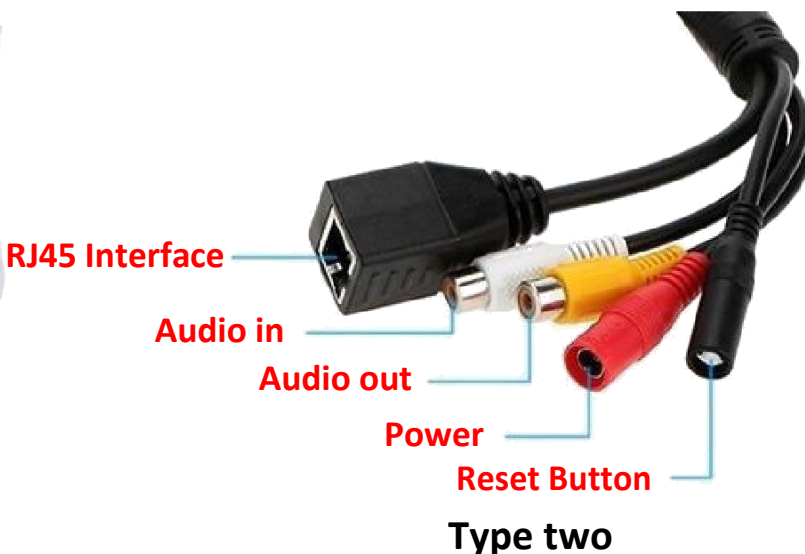
1.2 Product should contain:

As the picture shows:

IP Camera*1	Power adapter*1
User manual*1	Network cable*1
WIFI Antenna*1	Screws bag*1



1.3 Product interface.



2. Connect camera

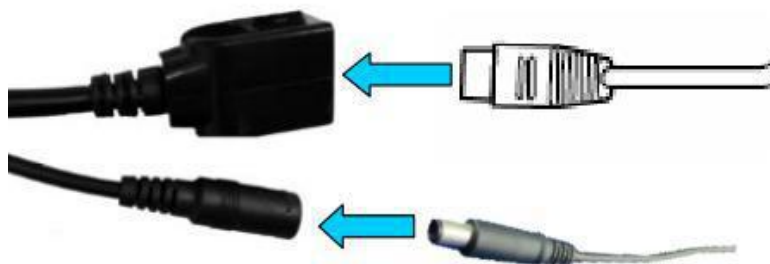
2.1 Connect network cable to router and plug in power adapter.



The router must be able to connect to the Internet!

Please use the standard power supply.

2.2 Connect LAN cable and power to camera, it needs about one minute to self checking and then start working.



Network indicator light (green): always flashing means network data transmission is normal.

If the camera is only connected to the power, it will open the AP mode. you can connect the camera via the AP mode. For details, please find help documentation “How to use the AP mode of the camera” in the CD.

3. View via mobile phone

3.1 Download “CamHi” from Google Play Store / Apple App Store or scan the QR code below to get APP information.

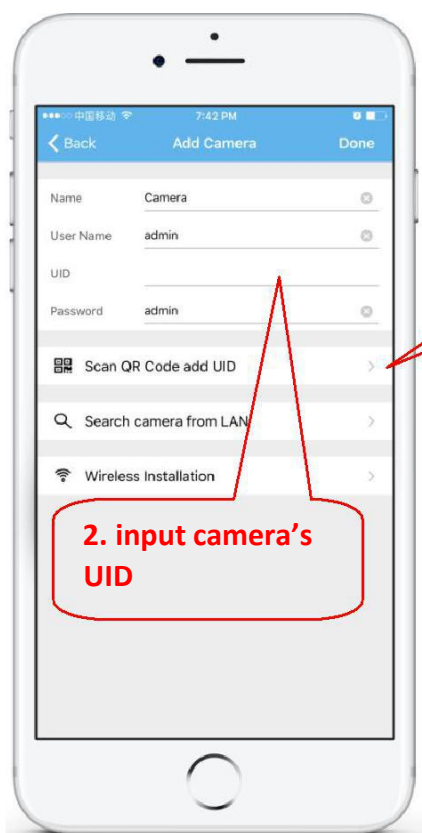
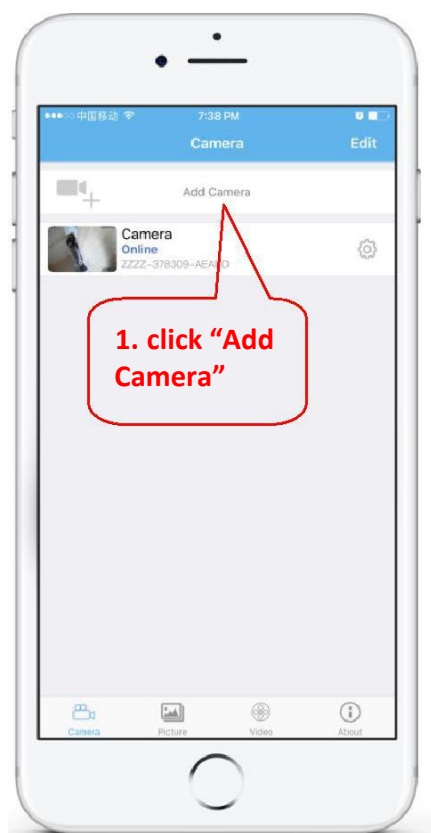


Android



IOS

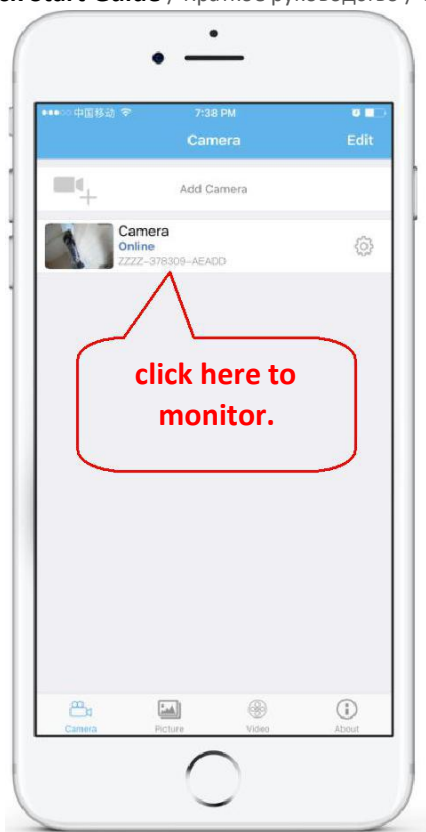
3.2 Run APP and Add Camera.



You can quickly enter the UID by scanning the QR code on the camera's label, as shown below



3.3 After adding the camera, click online camera to view real-time image.



Detailed instructions for CamHI are available in the CD.

4. View via PC

4.1 Install the "Search tool" from the CD, then run it to find the cameras.

The diagram illustrates the process of using the SearchTool. It shows two icons: 'search_setup' and 'SearchTool'. A green arrow points from 'search_setup' to 'SearchTool'. A larger green arrow points from 'SearchTool' to a screenshot of the SearchTool application window. The screenshot shows a network search results table with the following data:

NO	IP Address	Name	MAC Address	Version	port
0	192.168.1.122	IPCAM	00:ED:F8:04:31:DE	V7.1.0.2.1-20150817	

Callouts in the screenshot indicate: '1. Click "Refresh" to find the camera' pointing to the Refresh button, and '2. double click camera information to run browser to access the camera' pointing to the first row of the table. At the bottom of the window, there are 'Back', 'Next', and 'Cancel' buttons, and a message: 'Please select the device list, and then click Next to modify'.

Click "Next" can modify network parameters of the camera if you need to change them.

Local 192.168.1.18 The software finds available network setting for the Ipcamera automatically. We suggest you just use it you want to modify it manually

DHCP

IP	192 . 168 . 1 . 19	Name	IPCAM
SubMask	255 . 255 . 255 . 0	User	admin
GateWav	192 . 168 . 1 . 1	Passwoi	*****
Port	80	<input type="button" value="Pwd Reset"/>	

IP	192.168.1.122	Name	IPCAM
SubMas	255.255.255.0	Port	80
GateWa	192.168.1.1		
MAC	00:E0:F8:04:31:DE		

Click Next to confirm the selected device, click Back to reselect the

Default user name:
admin

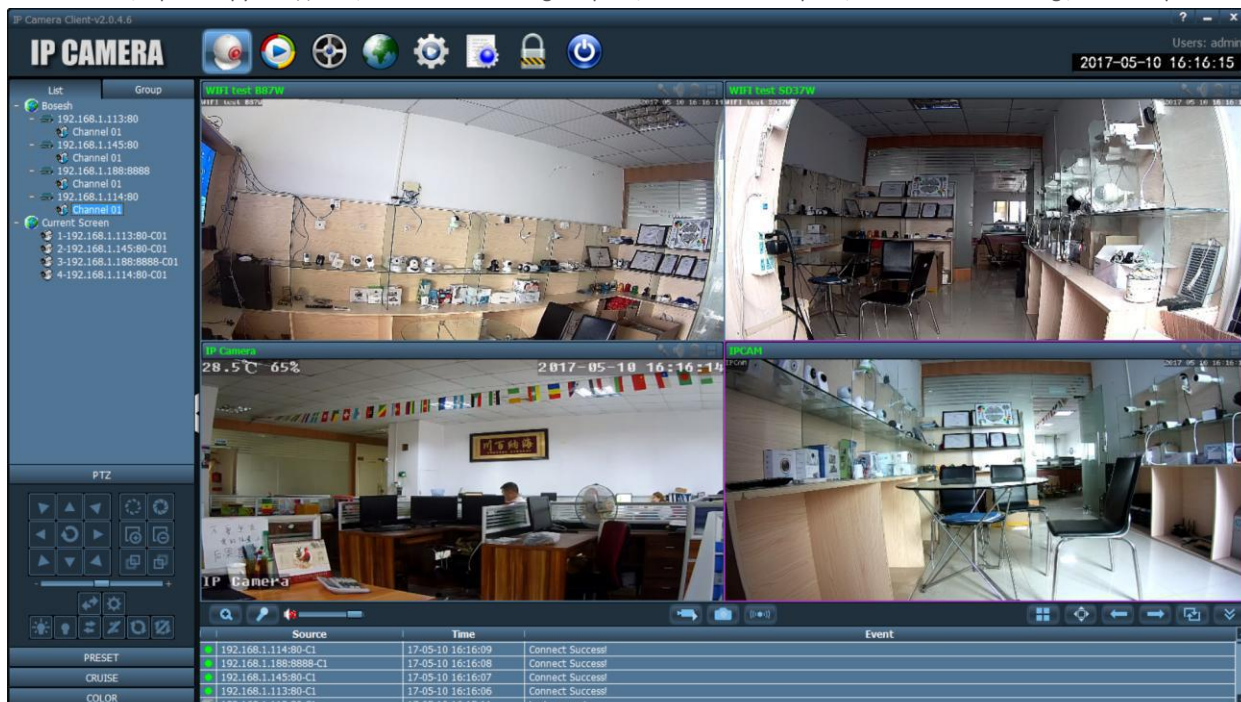
Default password:
admin

4.2 Access to the camera through browser on windows PC.



In browser you can view image and configure all parameters of camera.
if you are not using IE browser some settings will be missing.

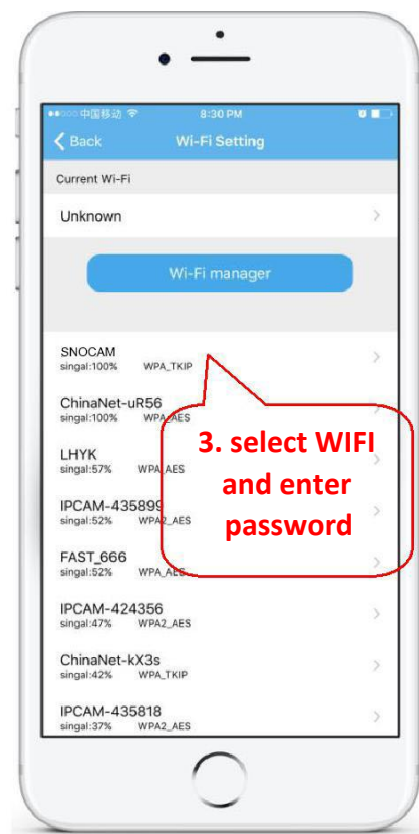
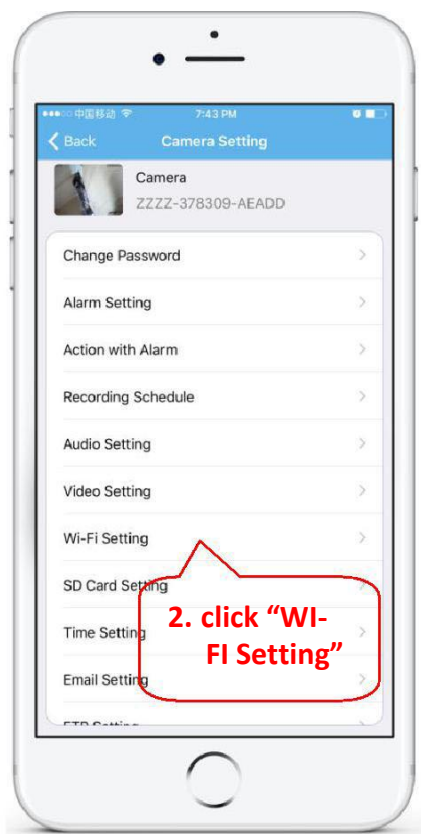
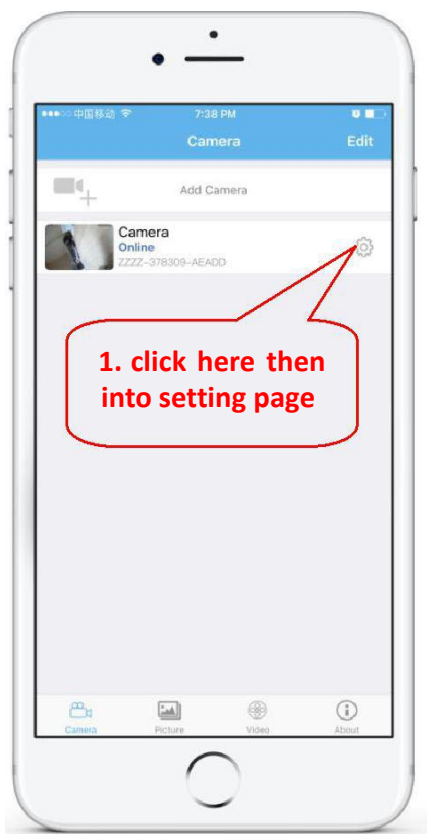
4.3 Connect and manage the multiple cameras via CMS on windows PC!



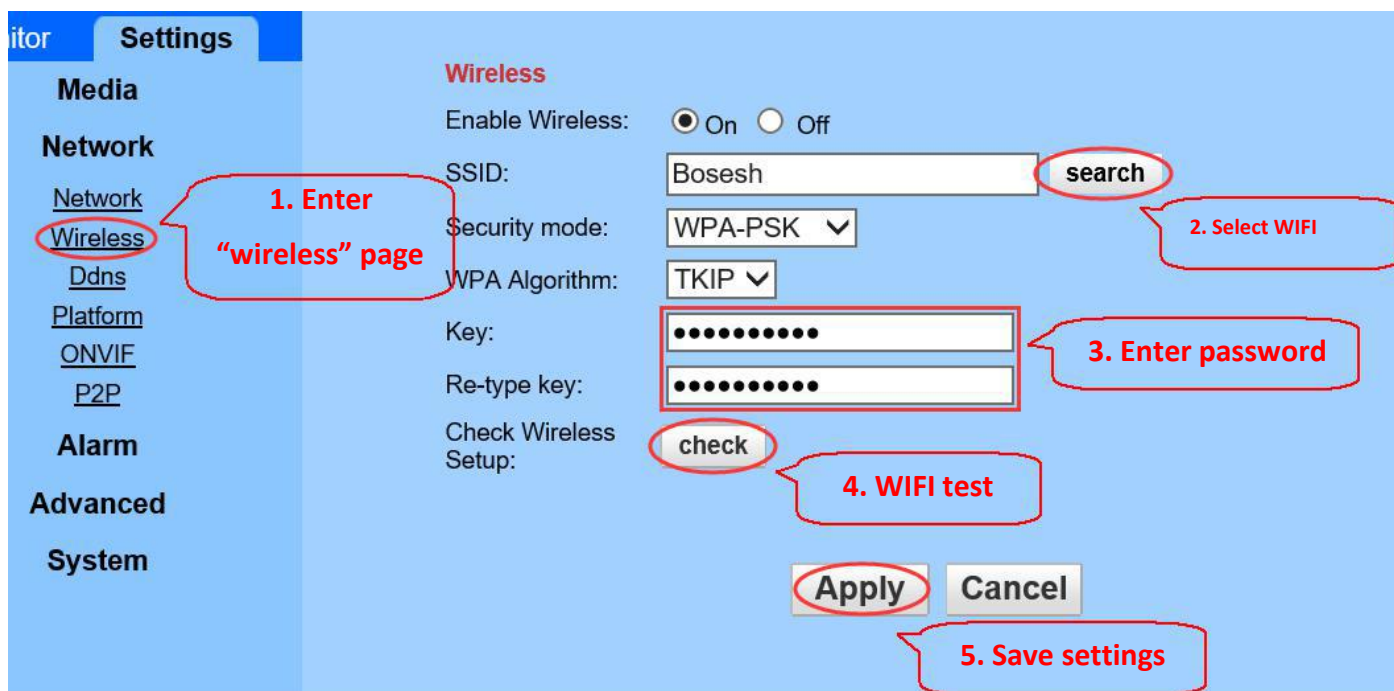
CMS installation packages and instructions are available in the CD.

5. Set WIFI

5.1 Set WIFI on phone.



5.2 Set WIFI via browser on PC.

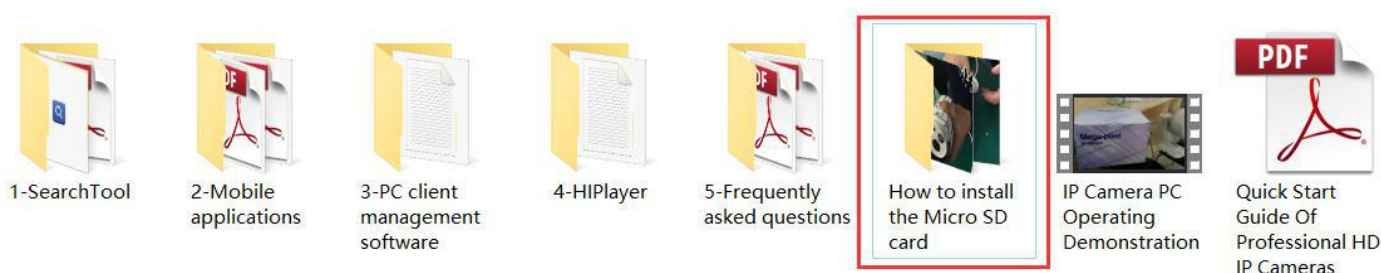


WIFI name must be english and can not contain special characters.

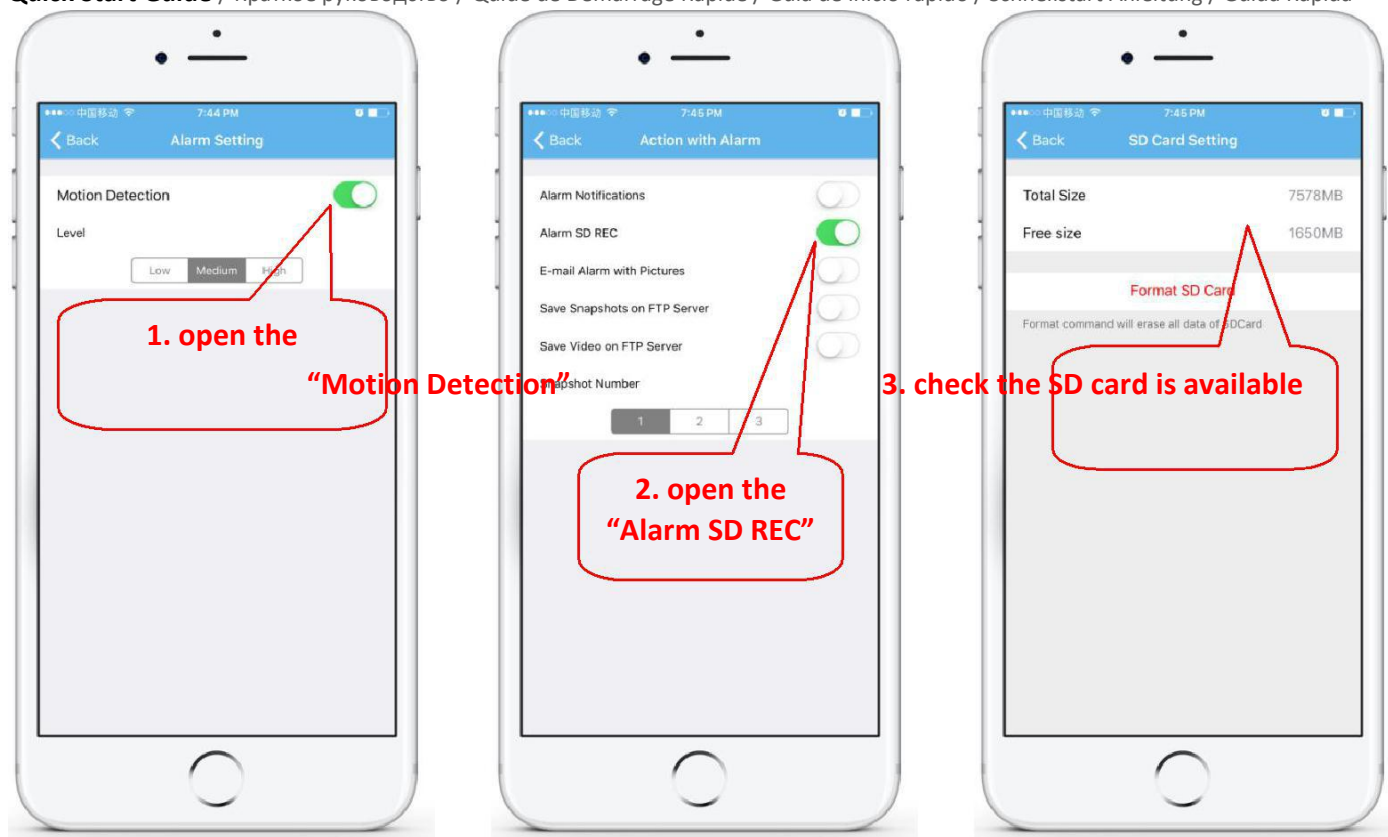
After the WIFI setting, if the camera is not connected to the network cable, it will automatically switch to WIFI connection.

6. Set Micro SD card record

6.1 Find the camera Micro SD card installation tutorials in the CD, install the Micro SD card to the camera.



6.2 Set motion detection alarm recording on the phone.

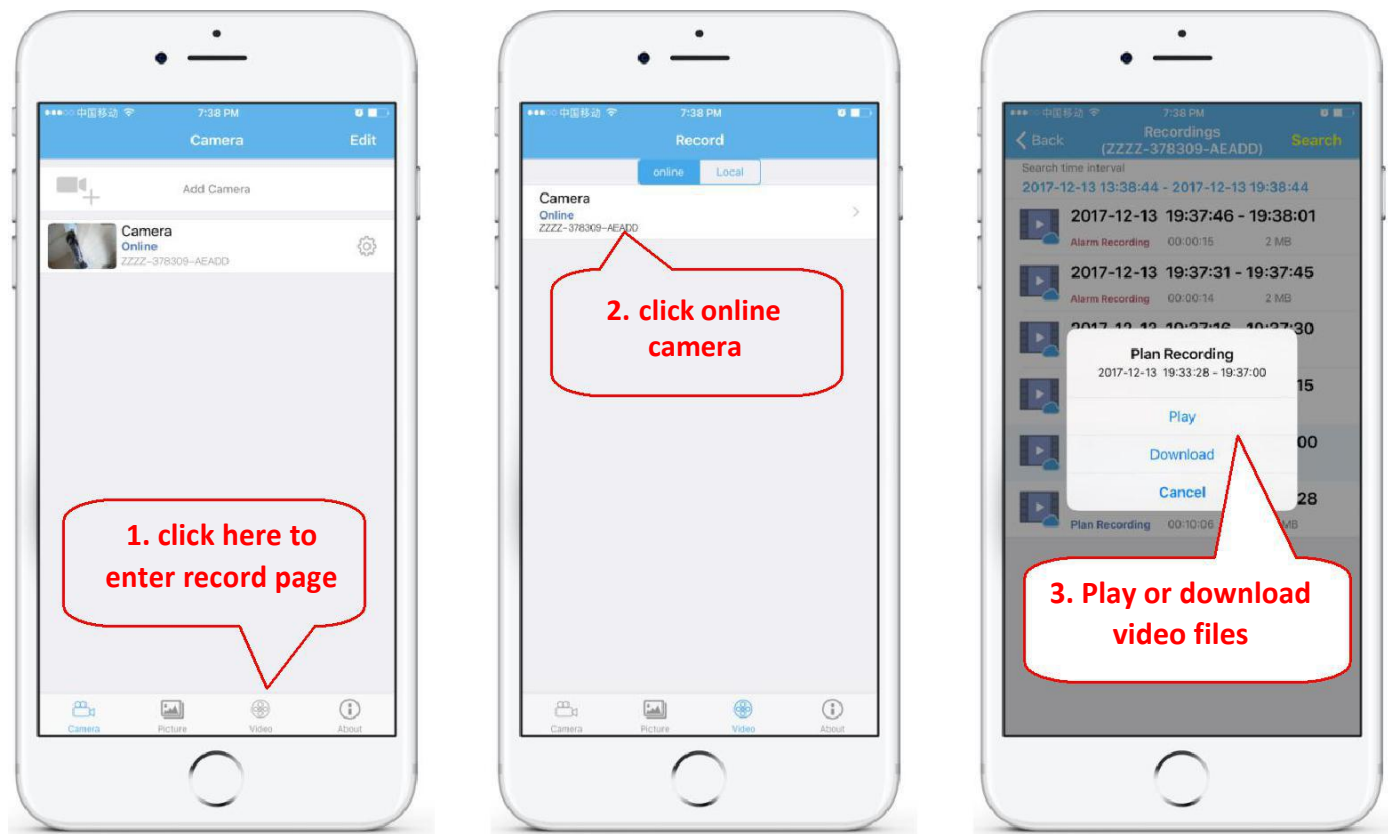


Motion detection alarm recording is recommended when the Micro SD card is small.

6.3 Set schedule recording on phone.



6.4 Playback record on phone.



These parameters can be set in more detail via IE browser on the PC!

7. Reboot and restore factory settings

7.1 Reconnect the power to restart the camera.



7.2 Press and hold the reset button for 15 seconds and the camera will restore to factory settings.



Also you can restart or reset the camera via mobile phone or PC.

8. More info

This manual is to help customers to know and use the camera quickly, For detailed instructions and video tutorials please refer to the content of CD information at www.cctvsno.com.

This manual may have descriptions and operations that do not match the product, If you have any questions or need technical support Please feel free to contact us or our dealers.